



Community Green Flag Award 2015
Highline Competition shortlisted 2012
Housing Design Award 2011
Shortlisted for an RIBA school award 2009
BURA award for Community Regeneration 2007
Civic Trust Award 2000
London in Bloom Award 1999
NHMB Greenleaf Housing Award 1997
Greening the City Award 1994
Civic Trust Award 1989

Ireland Albrecht, Landscape Architects with a passion to create beautiful and functional spaces. Emphasis is always on a fresh approach to every project, committed personal service, thorough and meaningful consultation, efficient use of space and resources, and meticulous attention to detail.

Established in London in 1991, providing a complete landscape design consultancy and project management service to public, commercial and private clients.

PARKS & PLAY BROCHURE

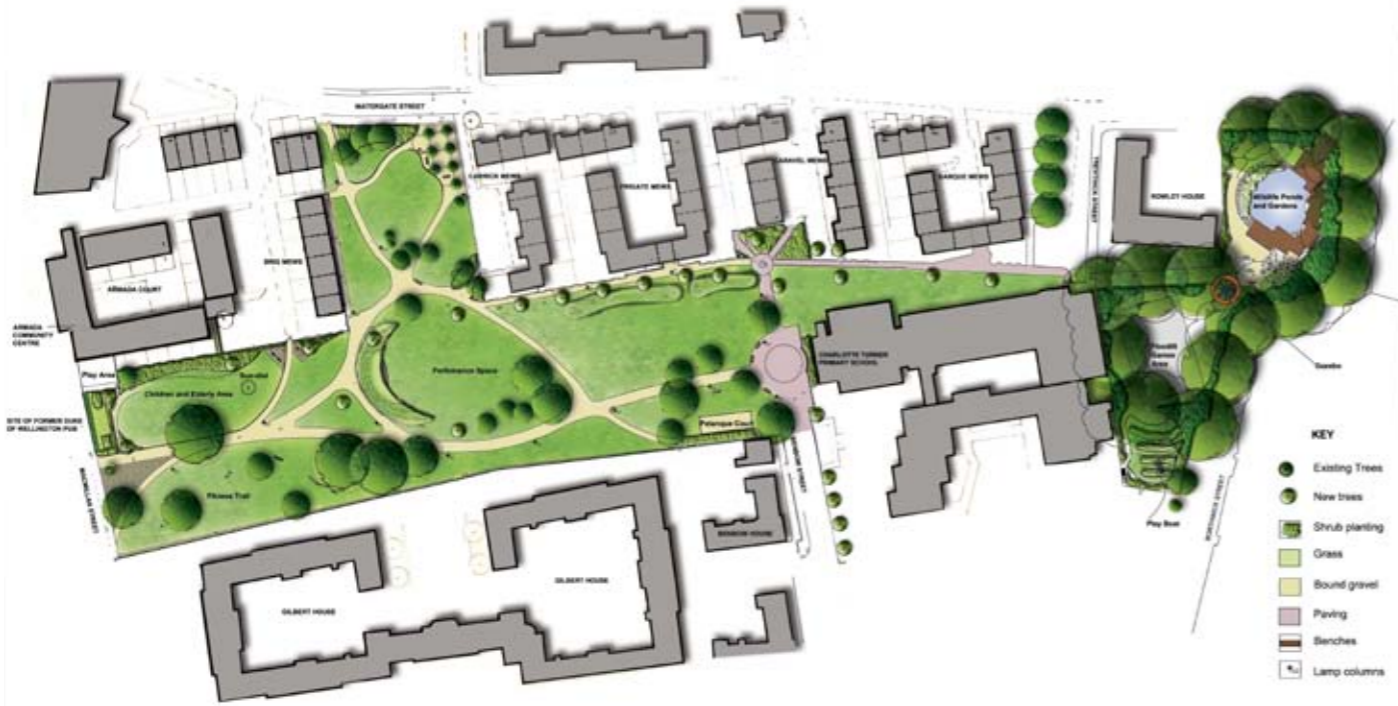
IRELAND ALBRECHT LANDSCAPE ARCHITECTS

Awarded a Civic Trust Award
in 2000

BURA award for Community
Regeneration 2007

Community Green Flag Award
2015

London in Bloom Award



TWINKLE PARK, CHARLOTTE TURNER GARDENS AND HUGHES FIELDS SCHOOL MASTERPLAN



CHARLOTTE TURNER GARDENS, DEPTFORD

Location: Deptford, London
 Client: Twinkle Park Trust for LB Greenwich
 Status: Completed 2014
 Contract sum: £1.2 m; 5 phases, including Twinkle Park (1997-2014)

Project description

Masterplan to completion of a new park and refurbishment of an existing park & school grounds over five phases. Featuring street closure & pedestrianisation of Benbow Street, creation of a large wildlife pond & floodlit MUGA for shared school & community use.

David led Phases 1, 2 & 3 (1998 - 2010) as lead consultant and Don carried this forward, with 2 phases culminating in the latest improvements in spring 2014, which included a natural play area for toddlers with bespoke sculptural pieces by a local artist.

CHARLOTTE TURNER GARDENS





TWINKLE PARK & HUGHES FIELD SCHOOL, DEPTFORD

Location: Deptford, London
 Client: Twinkle Park Trust for LB Greenwich
 Status: Completed 2000
 Contract sum: £350k; Phase 1 of Charlotte Turner Gardens
 5 Phase Masterplan (1997-2014)

Project description

First Phase of the Charlotte Turner Gardens Regeneration Masterplan. Working closely with The Twinkle Park Trust- a registered charity managing this public park for LB Greenwich. Each phase has involved public consultation which has required a close working relationship with all stakeholders. Features include Benbow Street closure & pedestrianised approach to school, large wildlife pond allowing pond-dipping, capturing rain water from adjacent roofs. Dual use of playground - for community use out of school hours, using lockable opening seating. Floodlit multi-use games area, native and naturalistic planting. Contemporary performance space through an architectural competition.



GRAHAM STREET PARK, ISLINGTON:

Location: Islington, London
 Client: LB Islington
 Project Team: Ireland Albrecht: Lead designers & Contract Administrators
 AJ Oakes and Partners: Quantity Surveyors
 TMS Construction Resources LTD: CDM Services
 Status: Phase 1 completion June 2015
 Project sum: £250,000

Project Description

Working with LB Islington Parks to produce a new masterplan for this existing park that bounds City Road Canal Basin.

Phase 1 completed in June 2015 featured:

New play facilities loosely defined into toddler and older kids areas, including:
 Large sand pit with water pump and rill, embankment slide, swings, planting, seating, bespoke play unit with bridge and numerous climbing levels.



GRAHAM STREET



HAVELOCK REGENERATION

Location: Ealing, London
 Client: Bouygues, Catalyst Housing
 Architects: PTE & Trower Davies Architects
 Status: Phase 1, including the new park:
 On site - Completion 2019

Project description

Ireland Albrecht were part of the Catalyst design team that gained planning approval for Havelock Regeneration Masterplan in 2014; a proposal for 1,200 new homes centred around a new park and bordered to the south by the Grand Union Canal.

We were novated to the Bouygues led design team and have recently completed detailed design, leading liaison with the LB Ealing Parks, to discharge planning conditions and provide detailed specification for construction.

HAVELOCK REGENERATION





ST MARY MAGDALENE CHURCH GARDENS:

Location: Islington, London
Client: LB Islington
Project Team: Ireland Albrecht: Lead designers & Contract Administrators
AJ Oakes and Partners: Quantity Surveyors
TMS Construction Resources LTD: CDM Services
Status: Completed May 2010
Contract Sum: £450,000

Project Description

Working with LB Islington, English Heritage, the church and community to transform a leafy but scary drinkers churchyard into a welcoming public space, retaining its tranquil spiritual quality.

The project has been extremely well received with a survey commissioned by Islington showing a 350% increase in visitors; one of the primary project aspirations.



ST MARY MAGDALENE CHURCH GARDENS



RAVENS COURT PARK
Basketball and Netball in the heart of the park

Location: Hammersmith
Client: London Borough of Hammersmith & Fulham
Status: Work stages A/B-L, Completion Aug 2012
Contract Sum: £170,000

Project Description:

Working with the parks department, park friends group, local stakeholders and funding partners to develop a high quantity, competition standard, Basketball & Netball facility within the heart of a well used park space that will also be used for informal play and park seating.

The project demanded a sensitive approach to working within a valued historic context with a large number of valuable mature trees. Now featured as a case study on the Sport England web site.



RAVENS COURT PARK





BARNARD PARK:

Location: Islington, London

Client: London Borough of Islington

Status: Due to commence on site 2017

Budget: £850,000

Project Description

- 1 - Islington's largest open space created from bomb damaged housing in 1966.
- 2 - Currently run down and dominated by Redgra pitches
- 3 - Active friends group 'Friends of Barnard Park' community planting event.
- 4 - Working through extensive consultation with friends group and stakeholders over 2 years, a masterplan was agreed.
- 5 - Masterplan to be submitted to planning March 2016:
Combining a 3G artificial turf sports pitch and large village green within a new footpath network improving accessibility, biodiversity and community.

BARNARD PARK



LEFEVRE PARK:

Location: Bow, East London
 Client: Circle Anglia Housing Association
 Status: Completed December 2005
 Budget: £950,000

Project Description

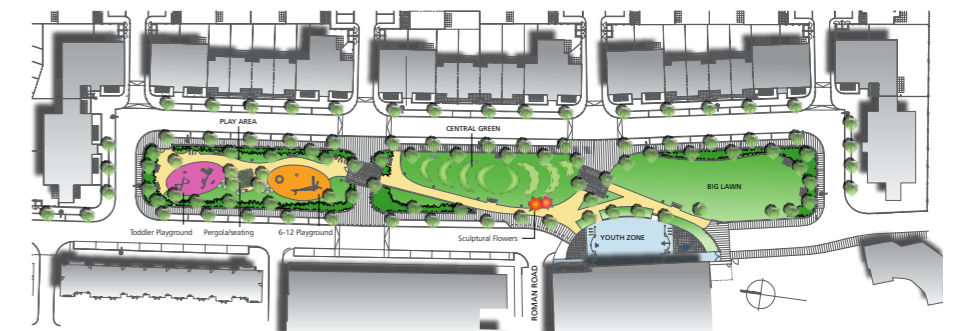
Part village green, part park and part urban space, Lefevre Park is the last phase and central focus of extensive regeneration in Bow, resulting from the phased demolition of the 1960's deck access Tredegar, Monteith and Lefevre Housing Estates.

East – West, approaching from the street market bustle of Roman Road, Lefevre Park is announced by the giant flower sculptures by artist Helena Roden. North – South, a spinal path links the four principle areas of the park: Play Area, Central Green, Big Lawn and Youth Zone. This is a new neighbourhood park or urban space conceived without boundary railings to allow a dynamic 24/7 urban space, crisscrossed with the everyday connecting routes of this new community. Contemporary play equipment and natural play elements feature throughout.

The linear nature of this space in effect creates more of a village green feel, with open grass and trees in the central areas, where there is a high level of footfall night and day. The play area is more traditional is it fenced and locked at night. The ball area is partially fenced and open, with low walls offering both ball stop and informal seating.

The giant flower sculptures by artist Helena Roden were the outcome of a separate consultation for art within the park, and have certainly become a distinctive landmark in the east end, offering an end view to Roman Road market.

A spinal footpath links the four principle areas of the park: Play Area, Central Green, Big Lawn and Youth Zone, to the new neighbourhoods beyond.



LEFEVRE PARK MASTERPLAN

LEFEVRE PARK





DAVID IRELAND *CMLI*

DIRECTOR

Senior Landscape Architect
CMLI1984
BA DIP LA Manchester (1982)

David has 25 years' experience as a Landscape Architect, working in leading Landscape Consultancies before establishing Ireland Associates in Greenwich in 1991, forming a partnership with Don Albrecht in 2008, changing the practice name to 'Ireland Albrecht' in 2010.

Areas of expertise & interest include Urban regeneration, project realisation, detail design, planting & garden design, arboriculture, ecology & conservation management. Founder member of Manor Park user group, Lewisham.



DON ALBRECHT *CMLI*

DIRECTOR

Senior Landscape Architect
CMLI 2001
MA Landscape Architecture: Greenwich 1998
BA Hons Architecture: University of Central England 1984

Don practiced as an architect for many years before returning to Study Landscape Architecture at Greenwich University in 1996. He joined David Ireland in 1998 becoming an Associate of Ireland Associates in 2003 and a partner in 2008.

Don's areas of particular interest and expertise include; educational and natural play environments, urban design, detailed and sustainable design. Don is a mentor on the Landscape Institutes Pathway to Chartership programme. Don is a founder member of the Steering Group for the Friends of Westcombe Woodlands, and is also a friend of East Greenwich Pleasance, a public park with a very active friends group.



LOTTIE PARKER *CMLI*

SENIOR LANDSCAPE ARCHITECT

CMLI 2009
Diploma in Landscape Architecture: Greenwich 2007
BA Hons in Landscape Architecture: Greenwich 2005

Lottie is a chartered landscape architect with a wide range of UK project experience including site masterplanning, urban/housing regeneration, public park restoration & community consultation.

Lottie has designed many special landscape elements such as bespoke play spaces and site specific features. Her expertise includes design detailing, site co-ordination, client liaison and planting design, with a particular in plants and horticulture.

Lottie leads many of our projects, including the recently completed Ealing Road development.



KERRIE MCKINNON

LICENTIATE LANDSCAPE ARCHITECT

MA Landscape Architecture: Greenwich 2016
Certificate: Landscape Architecture: Leeds Met. 2012
BA Hons Graphic Arts & Design: Leeds Met. 2006

Kerrie started her professional life as a graphic designer before moving 'upwards' to landscape architecture, fuelled by her passion for nature and care of the environment.

Her graphic experience is of great assistance in drawing production where she works on Sketch up and Presentation Drawings. Kerrie is fluent in all IT packages and is also a skilled freehand drawer.

Previously Kerrie has been involved in several community landscape initiatives including 'River of Flowers', a landscape initiative that supports the growing of food and wild flowers in cities.



THEO KIDMAN

ASSISTANT LANDSCAPE ARCHITECT

BA Hons Landscape Architecture: Greenwich 2015

Theo recently graduated from a BA hons in Landscape Architecture at the University of Greenwich. He is an enthusiastic and talented designer with good attention to detail.

Theo has recently been working on Baltimore Wharf and Heathside Phase 4, both currently on site.



OUR TEAM

Ireland Associates was established in Greenwich in 1991 and has been a registered practice of the Landscape Institute since this time. David Ireland and Don Albrecht have been working together as Ireland Albrecht since 1998. We were incorporated as a Ltd company in March 2014.

We believe in the highest personal service to our clients & stakeholders, and thorough and effective consultation with users groups.

Our clients are varied; working with forward thinking local Authorities such as Islington and Hammersmith, and in larger Design Team settings such as at Havelock Regeneration and Wornington Green. Our aspiration is quite simply to make our next project our best.

