



Community Green Flag Award 2015
Highline Competition shortlisted 2012
Housing Design Award 2011
Shortlisted for an RIBA school award 2009
BURA award for Community Regeneration 2007
Civic Trust Award 2000
London in Bloom Award 1999
NHMB Greenleaf Housing Award 1997
Greening the City Award 1994
Civic Trust Award 1989

Ireland Albrecht, Landscape Architects with a passion to create beautiful and functional spaces. Emphasis is always on a fresh approach to every project, committed personal service, thorough and meaningful consultation, efficient use of space and resources, and meticulous attention to detail.

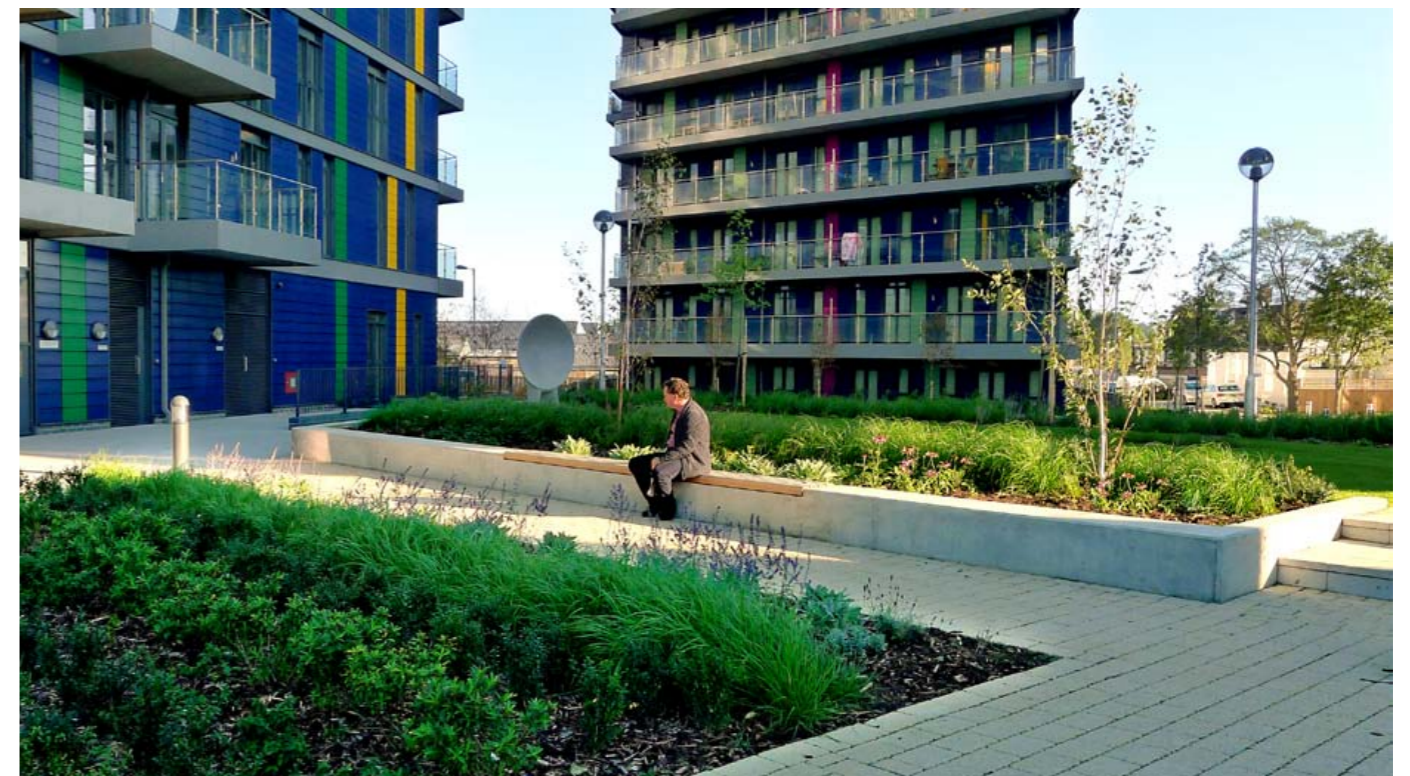
Established in London in 1991, providing a complete landscape design consultancy and project management service to public, commercial and private clients.

GENERAL BROCHURE

IRELAND ALBRECHT LANDSCAPE ARCHITECTS



243 EALING ROAD MASTERPLAN



243 EALING ROAD, ALPERTON:

Location: Alperton, London
 Client: Hill Construction. Network Housing Group
 Architects: BPTW Architects Design Team
 Status: Completed 2015

Project Description

A scheme that came to us as one amorphous area of open space around seven new residential towers bordering the Grand Union Canal at Alperton.

We developed a hierarchy of open spaces that includes; a new public square, two shared garden spaces, two play areas and incidental play features and a strategy to meet GLA criteria, a community garden, canal side and homezone spaces. A mixed private sales and affordable housing development with 460 residential units.



243 EALING ROAD



WORNINGTON GREEN, PORTOBELLO SQUARE:

Location: Portobello Road, London
 Client: Catalyst Housing Group
 Architects: PRP Architects Design Team
 Status: Ongoing, Detailed Planning gained Nov 2010
 Contract Sum: £73 million, phase 1 area.

Project Description

Wornington Green is a major regeneration project involving the phased demolition of the 1970's Wornington Estate. The masterplan proposals centre on the creation of a new London square with central gardens.

The Victorian road layout will be reinstated to enhance connectivity and break the existing isolated 'estate' feel. A mixed of 325 residential units with some commercial accommodation to Portobello Road.

Ireland Albrecht are currently detailing landscape proposals for Phase 2 for detailed planning submission in April 2016.



WORNINGTON GREEN

UNIVERSITY OF GLOUCESTERSHIRE, PITVILLE CAMPUS:

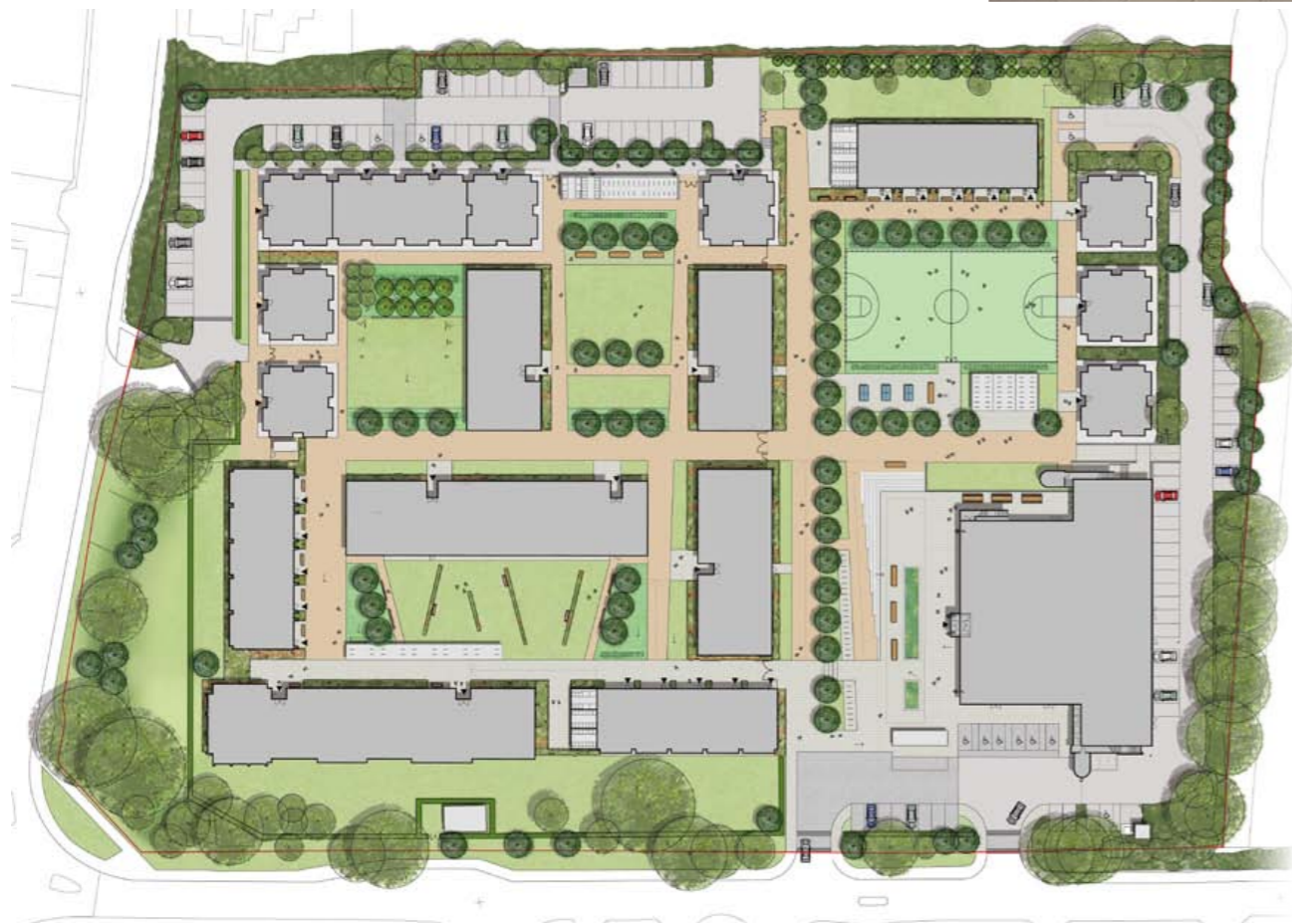
Location: Gloucestershire, London
Client: Buoygues
Architects: FCB Studios (planning) Willmore Illes Architects (current)
Status: On site

Project Description:

Masterplan for the university campus, with iconic student halls buildings, by Cullinan Studio Architects, retained.

Features include: a striking approach and entrance square and a dedicated sports area featuring a MUGA and table tennis.

The plan includes a secure zone for students, including communal garden spaces, bin and cycle storage.



UNIVERSITY OF GLOUCESTERSHIRE



HAVELOCK REGENERATION

Location: Ealing, London
 Client: Bouygues, Catalyst Housing
 Architects: PTE & Trower Davies Architects
 Status: Phase 1, including the new park:
 On site - Completion 2019

Project description

Ireland Albrecht were part of the Catalyst design team that gained planning approval for Havelock Regeneration Masterplan in 2014; a proposal for 1,200 new homes centred around a new park and bordered to the south by the Grand Union Canal. We were novated to the Bouygues led design team and have recently completed detailed design, leading liaison with the LB Ealing Parks, to discharge planning conditions and provide detailed specification for construction.



HAVELOCK REGENERATION





PHASE 2 MASTERPLAN



BALTIMORE WHARF - PHASE 2:

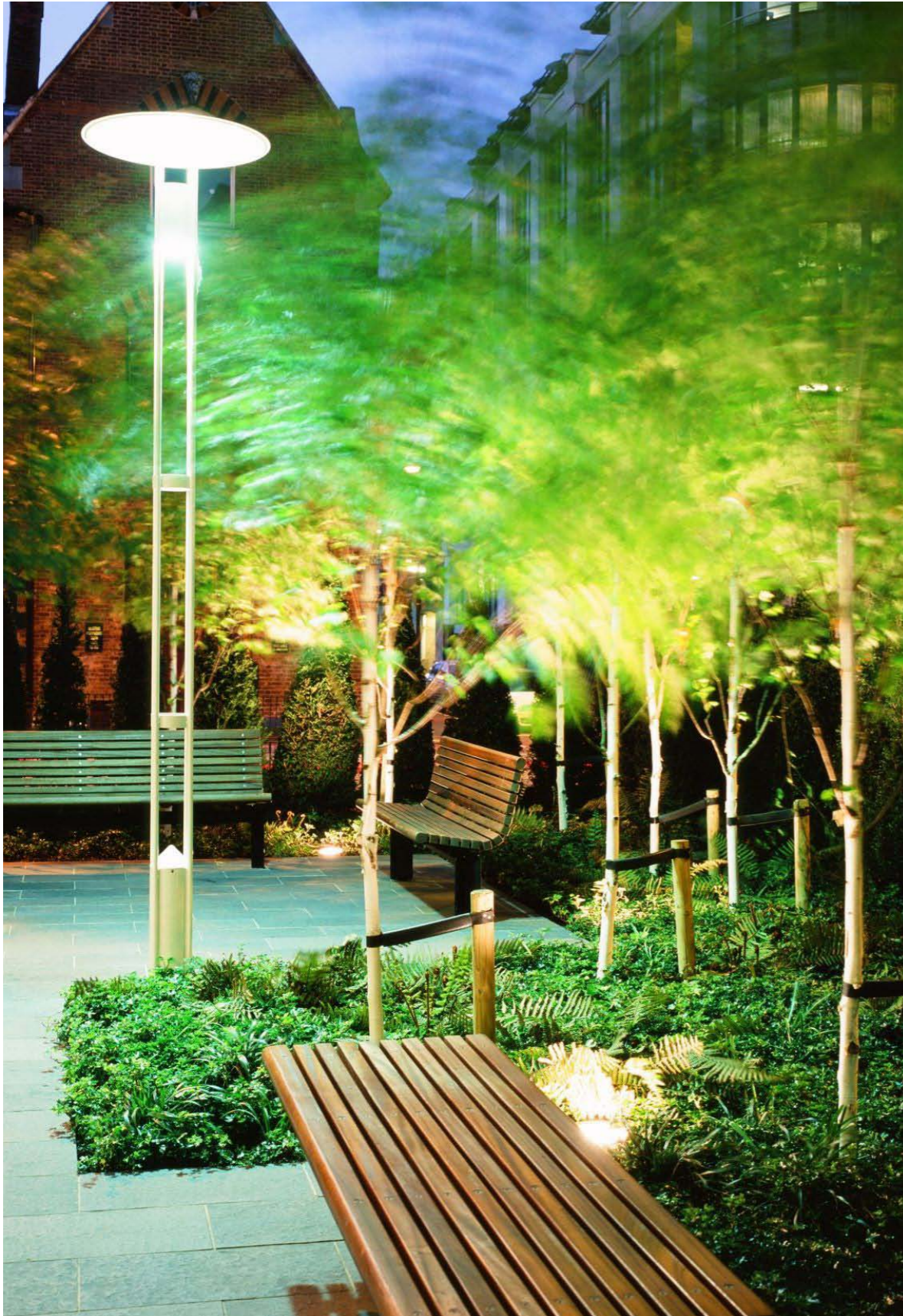
Location: Crossharbour, London
 Client: O'Shea Construction
 Architects: SOM Skidmore Owings & Merrill
 Status: Completion 2017

Project Description

Phase 2 of a masterplan for the Baltimore Wharf development in Docklands, featuring the 46 storey Residential tower by SOM Architects, smaller residential blocks and a hotel. Key features include play spaces, sculpture garden, communal garden and central 'islands' with water features and a 140m green wall.

BALTIMORE WHARF





MAERSK UK HEADQUARTERS:

Location: Aldgate, London
 Client: MAERSK
 Project Team: Ireland Albrecht: Lead designers & Contract Administrators AJ Oakes and Partners: Quantity Surveyors TMS Construction Resources LTD: CDM Services
 Status: Completed 2006
 Contract Sum: 220k

Project Description

Updating the entrance and surrounds to a striking modernist Seifert building as part of the refurbishment of the corporate headquarters of a multinational company.

Providing a private executive garden and an appealing entrance using high quality materials and contemporary design.

Contemporary lighting and furniture create pleasant spaces to sit.

MAERSK UK HEADQUARTERS



Awarded a Civic Trust Award in 2000
 BURA award for Community Regeneration 2007
 Community Green Flag Award 2015
 London in Bloom Award



CHARLOTTE TURNER GARDENS, TWINKLE PARK & HUGHES FIELD SCHOOL, DEPTFORD

Location: Deptford, London
 Client: Twinkle Park Trust for LB Greenwich
 Status: Completed 2014
 Contract sum: £1.2 m; 5 phases (1997-2014)

Project description

Masterplan to completion of a new park and refurbishment of an existing park & school grounds over five phases. Featuring street closure & pedestrianisation of Benbow Street, creation of a large wildlife pond & floodlit MUGA for shared school & community use.

David led Phases 1, 2 & 3 (1998 - 2010) as lead consultant and Don carried this forward, with 2 phases culminating in the latest improvements in spring 2014, which included a natural play area for toddlers with bespoke sculptural pieces by a local artist.

Working closely with The Twinkle Park Trust- a registered charity managing this public park for LB Greenwich. Each phase has involved public consultation which has required a close working relationship with all stakeholders.

Features include the creation of pedestrianised approach to school, large wildlife pond allowing pond-dipping, capturing rain water from adjacent roofs.

Other features: Dual use of playground - for community use out of school hours, using lockable opening seating. Floodlit multi-use games area, native and naturalistic planting. Contemporary performance space through an architectural competition.



CHARLOTTE TURNER GARDENS & TWINKLE PARK



ST MARY MAGDALENE CHURCH GARDENS:

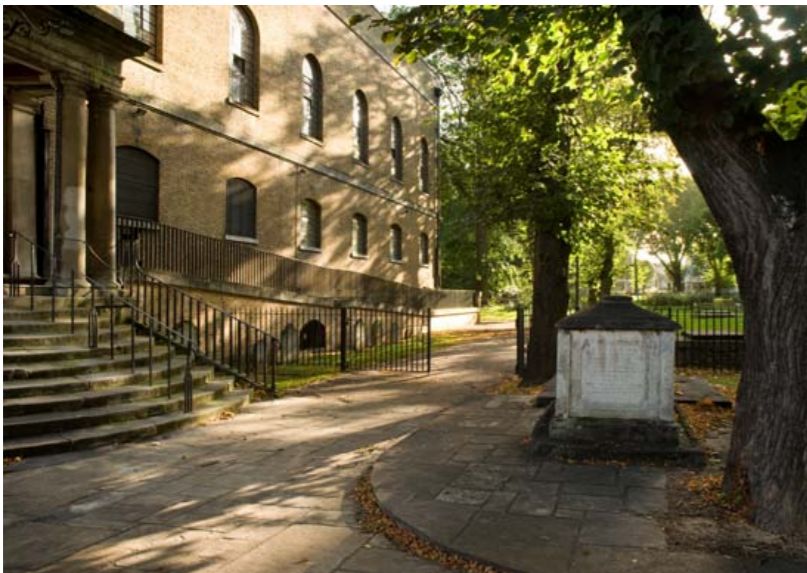
Location: Islington, London
 Client: LB Islington
 Project Team: Ireland Albrecht: Lead designers & Contract Administrators
 AJ Oakes and Partners: Quantity Surveyors
 TMS Construction Resources LTD: CDM Services
 Status: Completed May 2010
 Contract Sum: £450,000

Project Description

Working with LB Islington, English Heritage, the church and community to transform a leafy but scary drinkers churchyard into a welcoming public space, retaining its tranquil spiritual quality.

The gardens fronting Holloway Road were fenced, formal and perceived as not being open to the public. Access to the church was indirect and awkward. Park use was minimal due to fear of antisocial behaviour. Opening up enclosed spaces, moving listed fencing, creating new entrances in listed boundary walls and broad, direct footpaths between mature trees has put a beautiful church back in the middle of its spiritual gardens.

Visitor numbers have increased by 350%.



Carved thought provoking text.



Creating welcoming entrances.

ST MARY MAGDALENE CHURCH GARDENS





GRAHAM STREET PARK, ISLINGTON:

Location: Islington, London
 Client: LB Islington, Greenspace
 Project Team: Ireland Albrecht: Lead designers & Contract Administrators
 AJ Oakes and Partners: Quantity Surveyors
 TMS Construction Resources LTD: CDM Services
 Status: Phase 1 completed June 2015
 Project sum: £250,000

Project Description

Preparation of a Masterplan for phased refurbishment of a run-down existing park in a stunning canal-side location.
 Phase 1 provided a huge open sandpit with water pump and splash pond in recycled glass, an exciting bespoke series of play towers over soft play mounds and a 'stream' of loose rubber chips.



GRAHAM STREET PARK





LEFEVRE PARK:

Location: Bow, East London
 Client: Circle Anglia Housing Association
 Status: Completed December 2005
 Budget: £950,000

Project Description

Part village green, part park and part urban space, Lefevre Park is the last phase and central focus of extensive regeneration in Bow, resulting from the phased demolition of the 1960's deck access Tredegar, Monteith and Lefevre Housing Estates.

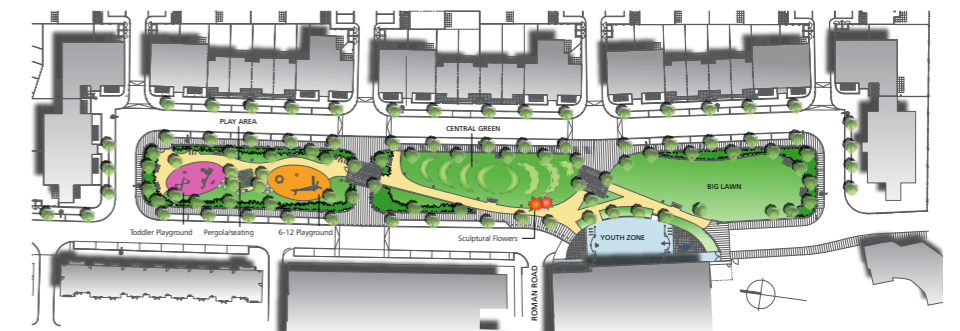
East – West, approaching from the street market bustle of Roman Road, Lefevre Park is announced by the giant flower sculptures by artist Helena Roden.

North – South, a spinal path links the four principle areas of the park: Play Area, Central Green, Big Lawn and Youth Zone. This is a new neighbourhood park or urban space conceived without boundary railings to allow a dynamic 24/7 urban space, crisscrossed with the everyday connecting routes of this new community. Contemporary play equipment and natural play elements feature throughout.

The linear nature of this space in effect creates more of a village green feel, with open grass and trees in the central areas, where there is a high level of footfall night and day. The play area is more traditional is it fenced and locked at night. The ball area is partially fenced and open, with low walls offering both ball stop and informal seating.

The giant flower sculptures by artist Helena Roden were the outcome of a separate consultation for art within the park, and have certainly become a distinctive landmark in the east end, offering an end view to Roman Road market.

A spinal footpath links the four principle areas of the park: Play Area, Central Green, Big Lawn and Youth Zone, to the new neighbourhoods beyond.



LEFEVRE PARK MASTERPLAN

LEFEVRE PARK





DAVID IRELAND *CMLI*

DIRECTOR

Senior Landscape Architect
CMLI1984
BA DIP LA Manchester (1982)

David has 25 years' experience as a Landscape Architect, working in leading Landscape Consultancies before establishing Ireland Associates in Greenwich in 1991, forming a partnership with Don Albrecht in 2008, changing the practice name to 'Ireland Albrecht' in 2010.

Areas of expertise & interest include Urban regeneration, project realisation, detail design, planting & garden design, arboriculture, ecology & conservation management. Founder member of Manor Park user group, Lewisham.



DON ALBRECHT *CMLI*

DIRECTOR

Senior Landscape Architect
CMLI 2001
MA Landscape Architecture: Greenwich 1998
BA Hons Architecture: University of Central England 1984

Don practiced as an architect for many years before returning to Study Landscape Architecture at Greenwich University in 1996. He joined David Ireland in 1998 becoming an Associate of Ireland Associates in 2003 and a partner in 2008.

Don's areas of particular interest and expertise include; educational and natural play environments, urban design, detailed and sustainable design. Don is a mentor on the Landscape Institutes Pathway to Chartership programme. Don is a founder member of the Steering Group for the Friends of Westcombe Woodlands, and is also a friend of East Greenwich Pleasance, a public park with a very active friends group.



LOTTIE PARKER *CMLI*

SENIOR LANDSCAPE ARCHITECT

CMLI 2009
Diploma in Landscape Architecture: Greenwich 2007
BA Hons in Landscape Architecture: Greenwich 2005

Lottie is a chartered landscape architect with a wide range of UK project experience including site masterplanning, urban/housing regeneration, public park restoration & community consultation.

Lottie has designed many special landscape elements such as bespoke play spaces and site specific features. Her expertise includes design detailing, site co-ordination, client liaison and planting design, with a particular in plants and horticulture.

Lottie leads many of our projects, including the recently completed Ealing Road development.



KERRIE MCKINNON

LICENTIATE LANDSCAPE ARCHITECT

MA Landscape Architecture: Greenwich 2016
Certificate: Landscape Architecture: Leeds Met. 2012
BA Hons Graphic Arts & Design: Leeds Met. 2006

Kerrie started her professional life as a graphic designer before moving 'upwards' to landscape architecture, fuelled by her passion for nature and care of the environment.

Her graphic experience is of great assistance in drawing production where she works on Sketch up and Presentation Drawings. Kerrie is fluent in all IT packages and is also a skilled freehand drawer.

Previously Kerrie has been involved in several community landscape initiatives including 'River of Flowers', a landscape initiative that supports the growing of food and wild flowers in cities.



THEO KIDMAN

ASSISTANT LANDSCAPE ARCHITECT

BA Hons Landscape Architecture: Greenwich 2015

Theo recently graduated from a BA hons in Landscape Architecture at the University of Greenwich. He is an enthusiastic and talented designer with good attention to detail.

Theo has recently been working on Baltimore Wharf and Heathside Phase 4, both currently on site.



OUR TEAM

Ireland Associates was established in Greenwich in 1991 and has been a registered practice of the Landscape Institute since this time. David Ireland and Don Albrecht have been working together as Ireland Albrecht since 1998. We were incorporated as a Ltd company in March 2014.

We believe in the highest personal service to our clients & stakeholders, and thorough and effective consultation with users groups.

Our clients are varied; working with forward thinking local Authorities such as Islington and Hammersmith, and in larger Design Team settings such as at Havelock Regeneration and Wornington Green. Our aspiration is quite simply to make our next project our best.

