

Community Green Flag Award 2015  
Highline Competition shortlisted 2012  
Housing Design Award 2011  
Shortlisted for an RIBA school award 2009  
BURA award for Community Regeneration 2007  
Civic Trust Award 2000  
London in Bloom Award 1999  
NHMB Greenleaf Housing Award 1997  
Greening the City Award 1994  
Civic Trust Award 1989

Ireland Albrecht, Landscape Architects with a passion to create beautiful and functional spaces. Emphasis is always on a fresh approach to every project, committed personal service, thorough and meaningful consultation, efficient use of space and resources, and meticulous attention to detail.

Established in London in 1991, providing a complete landscape design consultancy and project management service to public, commercial and private clients.

# EDUCATION BROCHURE

IRELAND ALBRECHT LANDSCAPE ARCHITECTS



Awarded a Civic Trust Award in 2000  
 BURA award for Community Regeneration 2007  
 Community Green Flag Award 2015  
 London in Bloom Award



**TWINKLE PARK, CHARLOTTE TURNER GARDENS & HUGHES FIELD SCHOOL, DEPTFORD**

Location: Deptford, London  
 Client: Twinkle Park Trust for LB Greenwich  
 Status: Completed 2014  
 Contract sum: £1.2 m; 5 phases (1997-2014)

**Project description**

Masterplan to completion of a new park and refurbishment of an existing park & school grounds over five phases. Featuring street closure & pedestrianisation of Benbow Street, creation of a large wildlife pond & floodlit MUGA for shared school & community use.

David led Phases 1, 2 & 3 (1998 - 2010) as lead consultant and Don carried this forward, with 2 phases culminating in the latest improvements in spring 2014, which included a natural play area for toddlers with bespoke sculptural pieces by a local artist.

Working closely with The Twinkle Park Trust- a registered charity managing this public park for LB Greenwich. Each phase has involved public consultation which has required a close working relationship with all stakeholders.

Features include the creation of pedestrianised approach to school, large wildlife pond allowing pond-dipping, capturing rain water from adjacent roofs.

Other features: Dual use of playground - for community use out of school hours, using lockable opening seating. Floodlit multi-use games area, native and naturalistic planting. Contemporary performance space through an architectural competition.

**CHARLOTTE TURNER GARDENS & TWINKLE PARK**



Before



After



### CROYDON HIGH SCHOOL

Location: Croydon, London

Client: GDST

Contract sum: £200k

### Project Description

The project is comprised of multiple phases aiming to completely redesign and overhaul the schools external spaces, including reconfiguring the major vehicle and pedestrian routes into and throughout the site.

The images illustrate works to the front entrance of the school (Phase 1) undertaken in the summer of 2015.

# CROYDON HIGH SCHOOL





**JOHN BALL PRIMARY SCHOOL  
PHASE 1 EARLY YEARS PLAYGROUND**

Location: Southvale Road, Blackheath London

Client: John Ball School working with parents and the London Borough of Lewisham.

Contract sum: £40,000

'Walkers Wood': £20,000

Completed: Autumn 2001



**Project Description**

Phase 1 Early years Centre. A new playground linking the existing nursery building and a new early years block by creating a distinctive 'teardrop' pattern within the hard landscape materials, serving as a backdrop for non-prescriptive play. Initial proposals were based on a more imaginative use of the budget for tarmac and concrete slabs.

Features include an exciting naturalistic sand pit with a removable jig-saw cover, a spiral of boulders allowing play and outdoor teaching beneath a canopy of Birch trees within soft play.

**UNIVERSITY OF GLOUCESTERSHIRE, PITVILLE CAMPUS:**

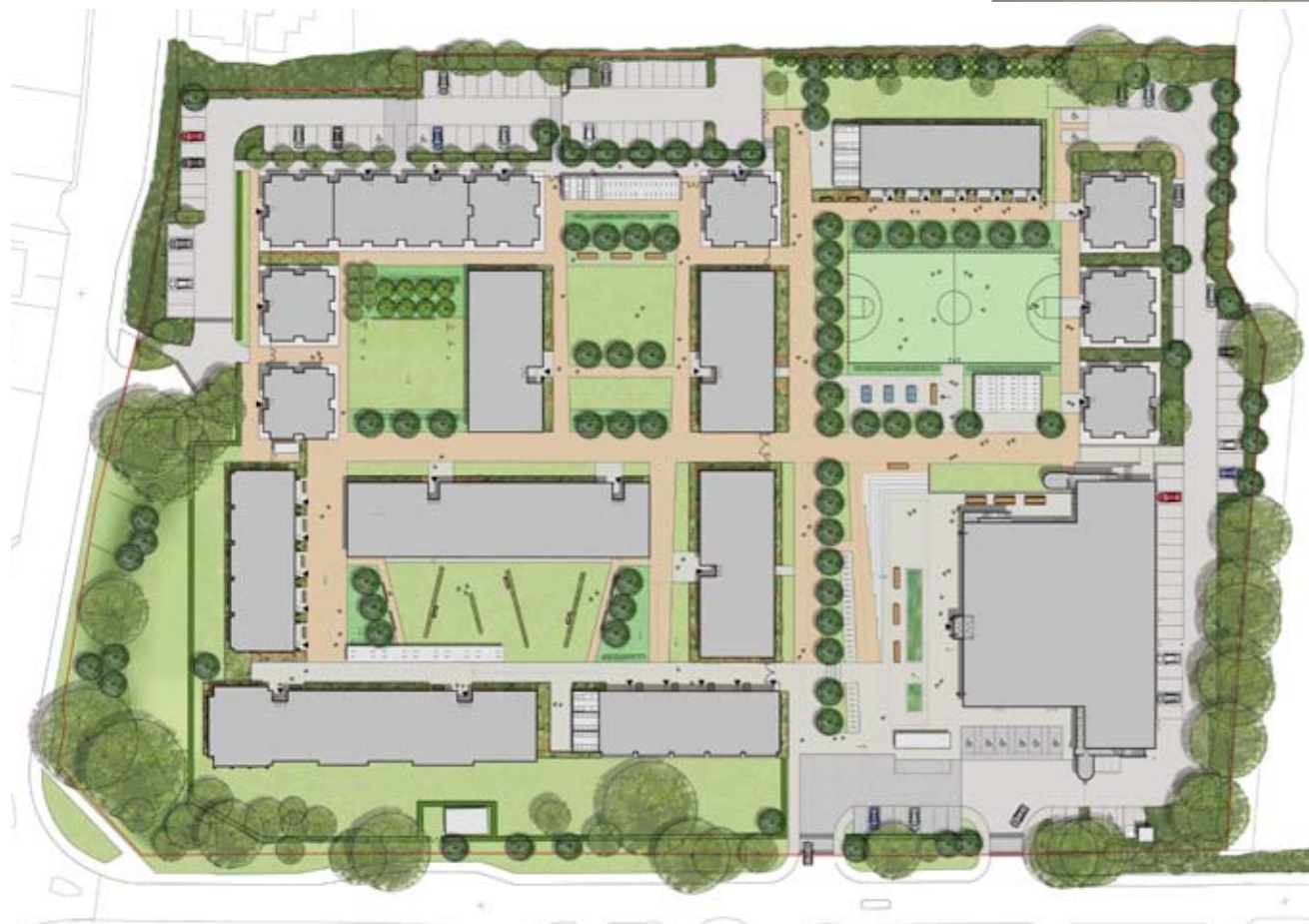
Location: Gloucestershire, London  
Client: Buoygues  
Architects: FCB Studios (planning) Willmore Illes Architects (current)  
Status: On site

**Project Description:**

Masterplan for the university campus, with iconic student halls buildings, by Cullinan Studio Architects, retained.

Features include: a striking approach and entrance square and a dedicated sports area featuring a MUGA and table tennis.

The plan includes a secure zone for students, including communal garden spaces, bin and cycle storage.



**UNIVERSITY OF GLOUCESTERSHIRE**



**CROSSWAYS ACADEMY**

Location: Telegraph Hill, London

Client : L.B Lewisham

Contract: £10 Million

Completed: September 2004

Project Team: IID Architects

Willmott Dixon D&B

**Project description**

A new sixth form centre of excellence for the London Borough of Lewisham for 750 students, completed in September 2004. The existing buildings of Telegraph Hill School were demolished to wipe clean the perception of failure that had long been associated with the site. The proposal includes footpath access from adjoining roads, linking two conservation areas, and the creation of a public space adjacent to the entrance on Sprules Road.

**Features:**

Extensive consultation with prospective students, local residents, stakeholders and planners. Challenging, steeply sloping site. Fast track design and build process with IID Architects and Willmott Dixon. Terrace Area Front entrance showing public Front entrance space

**CROSSWAYS ACADEMY**



## CHESSINGTON COMMUNITY COLLEGE

BSF Pathway Project, Secondary School New Build  
Location: Chessington, Royal Borough of Kingston, London.  
Client: RBK working with TFT & IID Architects Design Team.  
Contract Sum: £20 million.  
Completion: August 2009

### Key Landscape Design Features:

- Link a diagonal desire line from site entrance to new building.
- Create a contemporary civic space to the front.
- Unite the 'inward' atrium space to the external environment.
- Environmental Education Area, including a drainage swale utilising MUGA rainwater run-off.
- Allotment garden
- Outdoor performance space
- 5 no. Floodlit MUGA courts, available for community use.
- BREAM 'Very Good' (whole building rating).
- Safeguarding a wealth of existing trees.
- Creation of new habitats including: wetland, grassland, woodland edge, ecological garden.
- Sustainably sourced landscape materials where possible



## CHESSINGTON COMMUNITY COLLEGE



## SOUTHERN ROAD PRIMARY SCHOOL

Location: Newham, London  
 Client: Southern Road School  
 Project Sum Phase 1 £125K complete Sept 2010  
 & Status: Phase 2 £50K Complete Feb 2011

### Project Description

Our involvement at Southern Road stems back to 2009 when we were commissioned to do a costed masterplan for the whole school grounds. Our brief was simply to maximise the school grounds potential, with distinct proposals for all areas from the main entrance through Nursery to Key Stage 2. The phases completed include the whole rear of the school, where a previously bland strip of tarmac and failed grass has been transformed.



## SOUTHERN ROAD PRIMARY SCHOOL



## MEADLANDS PRIMARY SCHOOL

Reception & Nursery Playgrounds

Location: Ham, LB Richmond

Client: School, LB Richmond

Completed: October 2009

Budget: £84K

Brief: Developed with the school through design workshops in accordance with LB Richmond Design guidance for Early Years.

### Key elements to Reception:

- Large new reception class canopy adjacent to the classroom
  - New surfacing including artificial grass and coloured rubber play surface
  - Water play equipment with a hand pump for kids to assess water at any time!
  - Feature fence allowing class use to add sequences; counting, alphabet or artwork
  - Feature storytellers seat, to be painted as part of a future arts project
  - Double gates to link the two spaces with a paint 'blob' stepping route
- Key elements to Nursery:
- Sand play unit with pulleys and numerous inter action possibilities
  - Grass mound with boulders and dwarf retaining walls and loop path around
  - Planting for screening and interaction towards the rear nursery areas.
  - Improve existing canopy for under 2 or quiet area, with bespoke sand pit



## MEADLANDS PRIMARY SCHOOL



**DAVID IRELAND** *CMLI*  
**DIRECTOR**

Senior Landscape Architect  
CMLI1984  
BA DIP LA Manchester (1982)

David has 30 years' experience as a Landscape Architect, working in leading Landscape Consultancies before establishing Ireland Associates in Greenwich in 1991, forming a partnership with Don Albrecht in 2008, changing the practice name to 'Ireland Albrecht' in 2010.

Areas of expertise & interest include Urban regeneration, project realisation, detail design, planting & garden design, arboriculture, ecology & conservation management. Founder member of Manor Park user group, Lewisham.



**DON ALBRECHT** *CMLI*  
**DIRECTOR**

Senior Landscape Architect  
CMLI 2001  
MA Landscape Architecture: Greenwich 1998  
BA Hons Architecture: University of Central England 1984

Don practiced as an architect for many years before returning to Study Landscape Architecture at Greenwich University in 1996. He joined David Ireland in 1998 becoming an Associate of Ireland Associates in 2003 and a partner in 2008.

Don's areas of particular interest and expertise include; educational and natural play environments, urban design, detailed and sustainable design. Don is a mentor on the Landscape Institutes Pathway to Chartership programme. Don is a founder member of the Steering Group for the Friends of Westcombe Woodlands, and is also a friend of East Greenwich Pleasance, a public park with a very active friends group.



**LOTTIE PARKER** *CMLI*  
**SENIOR LANDSCAPE ARCHITECT**

CMLI 2009  
Diploma in Landscape Architecture: Greenwich 2007  
BA Hons in Landscape Architecture: Greenwich 2005

Lottie is a chartered landscape architect with a wide range of UK project experience including site masterplanning, urban/housing regeneration, public park restoration & community consultation.

Lottie has designed many special landscape elements such as bespoke play spaces and site specific features. Her expertise includes design detailing, site co-ordination, client liaison and planting design, with a particular in plants and horticulture.

Lottie leads many of our projects, including the recently completed Ealing Road development.



**KERRIE MCKINNON**  
**LICENTIATE LANDSCAPE ARCHITECT**

MA Landscape Architecture: Greenwich 2016  
Certificate: Landscape Architecture: Leeds Met. 2012  
BA Hons Graphic Arts & Design: Leeds Met. 2006

Kerrie started her professional life as a graphic designer before moving 'upwards' to landscape architecture, fuelled by her passion for nature and care of the environment.

Her graphic experience is of great assistance in drawing production where she works on Sketch up and Presentation Drawings. Kerrie is fluent in all IT packages and is also a skilled freehand drawer.

Previously Kerrie has been involved in several community landscape initiatives including 'River of Flowers', a landscape initiative that supports the growing of food and wild flowers in cities.



**THEO KIDMAN**  
**ASSISTANT LANDSCAPE ARCHITECT**

BA Hons Landscape Architecture: Greenwich 2015

Theo recently graduated from a BA hons in Landscape Architecture at the University of Greenwich. He is an enthusiastic and talented designer with good attention to detail.

Theo has recently been working on Baltimore Wharf, Croydon High School and Heathside Phase 4, all currently on site.



**OUR TEAM**

Ireland Associates was established in Greenwich in 1991 and has been a registered practice of the Landscape Institute since this time. David Ireland and Don Albrecht have been working together as Ireland Albrecht since 1998. We were incorporated as a Ltd company in March 2014.

We believe in the highest personal service to our clients & stakeholders, and thorough and effective consultation with users groups.

Our clients are varied; working with forward thinking local Authorities such as Islington and Hammersmith, and in larger Design Team settings such as at Havelock Regeneration and Wornington Green. Our aspiration is quite simply to make our next project our best.

